

玉梅令

Yu Mei Ling

Jade Plum Ditty

Qin tuning is 5 6 1 2 3 5 6, but open first string ("5") is tuned between B and C, meaning that what is written here as "C" is actually played between Eb and F)

Main tonal center = 6; secondary = 3

Scale is 1 2 3 5 6 7 1 (7 leads to 6)

Lyrics by 姜夔 Jiang Kui (1155-1221);

Melody attributed to 范成大

Fan Chengda (d. 1193);

Translation largely follows Picken

Compare mm. 3-6 with mm. 11-14



疏 疏 雪 片， 散 入 溪 南 苑； 春 寒 鎖 舊 家 亭 館。
Su su xue pian, san ru Xi Nan Yuan; chun han suo jiu jia ting guan.
 Scattered snow flakes drift into Stream-south Garden; a spring chill blocks up the old family pavilion hall.

① 六 勾 六 勾， 四 四 勾 勾 勾， 四 勾 勾 三 四 三 五。



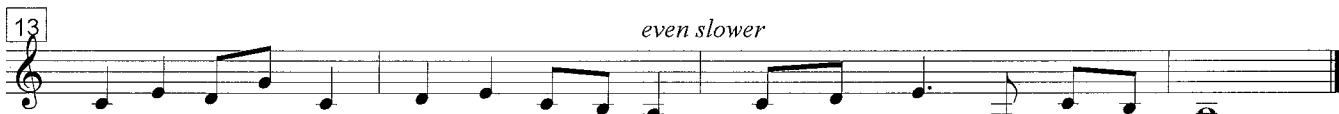
有 玉 梅 幾 樹， 背 立 怨 東 風； 高 花 未 吐， 暗 香 已 遠。
You yu mei ji shu, bei li yuan dong feng; gao hua wei tu, an xiang yi yuan.
 There are jade-plum trees, turning / backs / mourn the east wind; higher flowers / blossomed, / hidden fragrance already / far.
several their as they have not yet but the has spread

外 勾 四 勾 六 勾， 四 四 勾 勾 勾， 勾 三 勾 尾 勾 勾 勾 =。



公 來 領 客， 梅 花 能 勸； 花 長 好 願 公 更 健。
Gong lai ling ke, mei hua neng quan; hua chang hao yuan gong geng jian.
 The host comes to greet the guests, / plum blossoms can urge /; / flowers as they grow like to wish our host renewed health.
but the (them to have a drink) (and) (beautifully)

外 六 五 勾 五， 六 三 勾 勾， 四 勾 勾 勾 四 勾 五。



便 揉 春 爲 酒， 翦 雪 作 新 詩； 拚 一 日， 繞 花 千 轉。
Bian rou chun wei jiu, jian xue zuo xin shi; pan yi ri, rao hua qian zhuan.
 So bend spring to make wine, / cut snow to make new poems; Heedless for one day, we circle the flowers a thousand times.
(squeeze) and

外 勾 四 勾 尾 勾， 四 四 勾 勾 勾， 勾 四 四 勾 勾 勾。